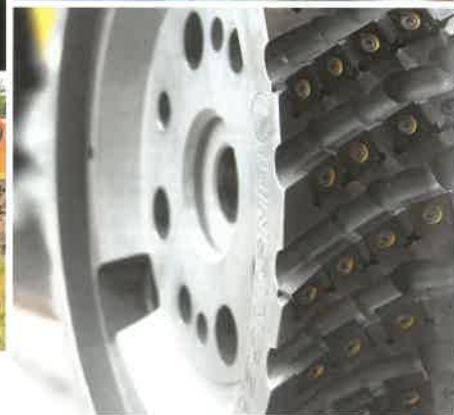
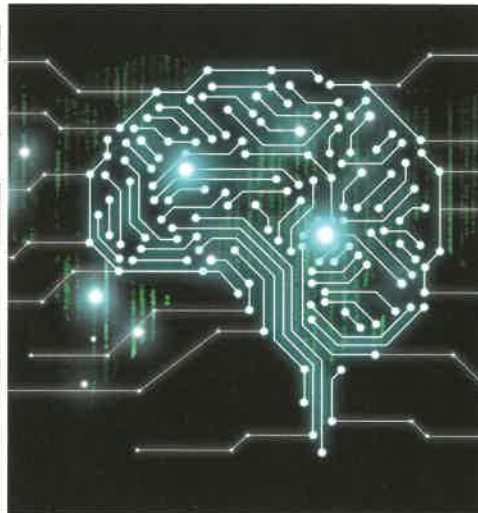




“ By embracing technological innovation, railways can achieve seamless multimodal integration, bringing down costs, cutting red tape and enabling the introduction of new services...” ”

ELISABETH WERNER,
Director for Land Transport (Rail and Road), European Commission DG for Mobility and Transport

06



01 WELCOME
Making way for the impact of AI
Craig Waters, Editor,
Global Railway Review

04 NEWS
A round-up of the latest industry news

06 EXPERT VIEW
More to do for rail to prosper in Europe
Elisabeth Werner, Director for Land Transport (Rail and Road), European Commission DG for Mobility and Transport

08 ROLLING STOCK
SNCF's train of the future: Connected, driverless and emission-free
Carole Desnost, Head of Innovation and Research, SNCF

12 EVENT PREVIEW
Asia Pacific Rail 2019

14 TRACK MAINTENANCE MACHINERY
Experiencing first-hand high-capacity, precision and reliability at Plasser & Theurer
Tara Nolan, Junior Editor,
Global Railway Review

28 FEATURE PARTNERSHIP
Effective cooperation leads to industry-wide support
MATISA SA

32 WEBINAR PREVIEW
Next generation of spares services by a new online marketplace and advanced 3D parts
With Siemens Mobility GmbH

33 EVENT PREVIEW
Middle East Rail 2019

37 FREIGHT
Etihad Rail: How the UAE's infrastructural mega-project is connecting the Emirates
Shadi Malak, CEO, Etihad Rail



Contents



- 40 **SUSTAINABILITY**
European rail freight: 30 per cent modal share by 2030
Geert Pauwels, CEO, Lineas
- 43 **EVENT PREVIEW**
SIFER 2019
- 54 **INTERVIEW SPOTLIGHT**
With Jose Gonzalez
Co-Founder and CEO, Galgus
- 58 **INFRASTRUCTURE**
Insulated rail joints: A solution to improve lifetime and performance at high maintenance track sections
Martin Quirschmair (Getzner Werkstoffe), Erik Frohberg (BNSF Railway) and Harald Loy (Getzner)
- 62 **EVENTS DIARY**
A round-up of forthcoming industry events
- 64 **PRODUCT SHOWCASE**
State-of-the-art rail milling technology
From Linsinger

@GlobalRailway

In-Depth Focus

ARTIFICIAL INTELLIGENCE



18 Developing AI: Keeping rail innovation on track

Daniel Beutler
President,
Trainline International

22 Exploring bias, explainability and accountability of AI and deep learning challenges in the railway sector

Alejandro Saucedo
Chief Scientist, Institute for Ethical AI & Machine Learning

25 Hype or reality?

Gayang Ho
Research and Policy Development Lead, UITP Asia-Pacific Centre for Transport Excellence (AP CTE)

In-Depth Focus

PASSENGER CONNECTIVITY



46 Now arriving: The hyper-connected train

Patrick Lortie and Sebastian Janssen
Oliver Wyman

50 An important part of providing a high-quality travel experience

Øystein Risan
CEO, Norske tog AS
Linda Marie Venbakken
CFO, Norske tog AS

56 Giving passengers more control over their journeys

Jacqueline Starr
Managing Director of Customer Experience,
Rail Delivery Group (RDG)

COVER SPONSOR

Linsinger reprofiles the complete rail head of new and used rails in single-pass processing by using sophisticated Linsinger milling technology. Linsinger has more than six decades' experience in milling technology and there are currently more than 50 rail milling vehicles in operation around the world. www.linsinger.com



Global Railway Review wants you

Global Railway Review is looking for authors. If you represent a railway operator, infrastructure owner, industry association or research institute and are interested in submitting informative and thought-provoking content about digitalisation, infrastructure, rolling stock, the passenger, signalling and telecommunications, safety and security, sustainability or regulations and legislations, please send a synopsis to Craig Waters, Editor, at cwaters@russellpublishing.com